

IPAD

Intelligent Public Access Defibrillator



iPAD SP1 Automated External Defibrillators



iPAD SP1 Carry Case

iPAD SP1 Fully Automatic

iPAD SP1 Semi Automatic

Semi or fully automatic. The choice is yours.

#creatinglifesavers

Trusted technology, proven simplicity... Because life matters

The iPad SP1 has innovative features and uses advanced technology to save precious seconds when every second counts.



T: 01 5079900 / 069 66006



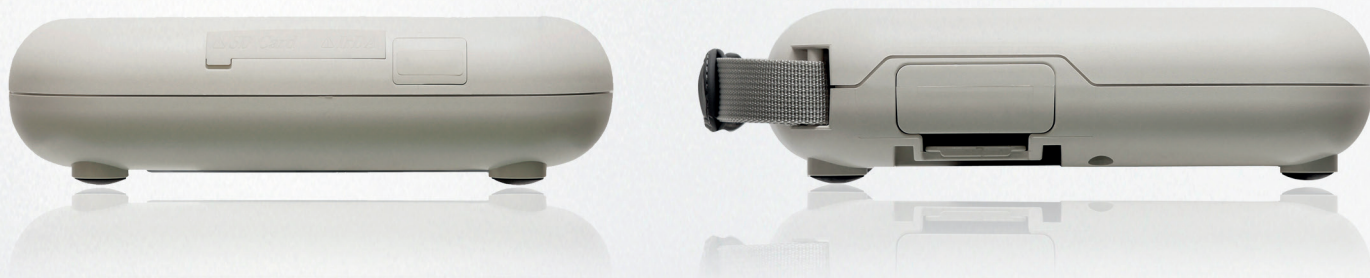
iPAD SP1 Fully Automatic

iPAD SP1 Semi Automatic



Features

- ✓ Robust one-piece design
- ✓ Simple switch from adult to child mode
- ✓ Dual adult/child electrode pads
- ✓ Ambient noise detector
- ✓ CPR detection & metronome
- ✓ Pad life indicator
- ✓ Battery level indicator
- ✓ Operational status indicator
- ✓ Clear visual & verbal guidance
- ✓ Large internal memory can store 5 events, up to 3 hours per event
- ✓ Simple data access with SD card download
- ✓ Free software
- ✓ Remote data conversion service



T: 01 5079900 / 069 66006



Benefits

Save precious seconds when a child's life is in your hands

The iPAD SP1 comes with dual adult and child electrode pads. There is a simple switch to select the adult or child setting. No pad changes or setting changes are required.

Audible instructions always heard in noisy environments

The iPAD SP1 has an ambient noise detector. In a noisy environment, the volume of the voice prompts will automatically increase up to 90 decibels. Verbal guidance will always be heard above high levels of background noise.

Nothing to break or lose with robust one-piece design

Well reputed for its high quality construction, the iPAD can be relied on to perform and endure emergency usage time after time.

Makes saving someone's life as simple as possible

The iPAD SP1 intelligently guides a rescuer at the pace at which they work. Large, clear illuminated instructions and calm voice prompts give guidance at every step.

If data is required, data download is simple with the device in situ

Up to 15 hours of usage can be stored in the memory of the SP1. Should the data be required, the download process can be performed with a simple SD card. The device does not need to be sent away.

Highly responsive when it matters most

The iPAD uses the latest in defibrillation technology to ensure that the device works as quickly as possible. After a cycle of 2 minutes of CPR, the device can perform analysis and be ready for shock delivery in less than 5 seconds.

More than just an AED

Additional support options are available as standard to make the installation and long-term care of your defibrillator as simple and worry-free as possible:

- ✓ Support with Ambulance Service integration
- ✓ Dedicated iPad AED helpline
- ✓ Online data upload and conversion service
- ✓ 7 year warranty as standard
- ✓ Free upgrade to unrivalled 10 year warranty upon registration
- ✓ PR and marketing support
- ✓ Training resources: videos and quick reference guides



Device Specifications - Model Name: CU-SP1

Physical

Category	Nominal Specifications
Dimensions	260mm x 256mm x 69.5mm (Width x Length x Height)
Weight	2.4kg (Including the battery pack and pads)

Environmental

Category	Nominal Specifications
Operational Status	(The device is in emergency use) Temperature: 0°C ~ 43°C (32°F ~ 109°F) Humidity: 5% ~ 95% (non condensing)
Standby Status	(The device is stored together with the defibrillator pads and the battery pack is inserted — ready to be used in an emergency) Temperature: 0°C~ 43°C (32°F ~ 109°F) Humidity: 5% ~ 95% (non condensing)
Altitude	0 to 15,000 feet (operational and storage)
Drop Withstands	1.2-meter drop to any edge, corner, or surface
Vibration	Operating: Meets MIL-STD-810G Fig.514.6E-1, random Standby: Meets MIL-STD-810G Fig.514.6E-2, swept sine (helicopter)
Sealing	IEC 60529: IP55
ESD	Meets IEC 61000-4-2:2001
EMI (Radiated)	Meets IEC 60601-1-2 limits, method EN 55011:2007 +A2:2007, Group 1, Class B
EMI (Immunity)	Meets IEC 60601-1-2 limits, method EN 61000-4-3:2006 +A1:2008 Level 3 (10V/m 80MHz to 2500MHz)

Defibrillator

Category	Nominal Specifications
Operating Mode	Fully-automatic or Semi-automated
Waveform	e-cube biphasic (Truncated exponential type)
Output Energy	150 J at 50 Ω load for adults 50 J at 50 Ω load for children
Charge Control	Controlled by an automated patient analysis system
Energy Storage	10 seconds, typical. Using new disposable LiMnO ₂ battery pack (at 20°C)
Charging Time	11 seconds, typical. Using new disposable LiMnO ₂ battery pack, depleted by 15 discharges at 200 Joules per discharge (at 20°C)
Time from CPR to Shock	Less than 6 seconds from the completion of CPR to shock delivery
Discharge	The device performs a self-discharge in the following events: <ul style="list-style-type: none">• When the patient's ECG changes to a rhythm that does not require defibrillation.• When the device is turned off by pressing the Power Button for at least a second.• When the pad is detached from the patient's body or the pad connector is detached from the device.• When the impedance of the patient is out of the range of defibrillation (25 Ω ~ 175 Ω)• (Semi-automatic only) When the shock button is not pressed within 15 seconds from the completion of the charge
Fully-Automatic Shock	Shock is automatically delivered if a shockable rhythm is detected

Get in touch to find out more

T: **01 5079900 / 069 66006**

W: **www.hayesfirstaid.com**

IPAD
Intelligent Public Access Defibrillator